

N1/2 OF NE1/4 OF NW1/4 SEC.33, T.21S., R.27E., M.D.B.&M.

Tax Area Codes 259-34

004-133

004-028

Bk.  
245

**DISCLAIMER**  
THIS MAP WAS PREPARED FOR LOCAL  
PROPERTY ASSESSMENT PURPOSES ONLY  
AND THE PARCELS SHOWN HEREON MAY  
NOT COMPLY WITH STATE AND LOCAL  
SUBDIVISION ORDINANCES, AND NO  
LIABILITY IS ASSUMED FOR THE USE  
OF THE INFORMATION SHOWN HEREON.

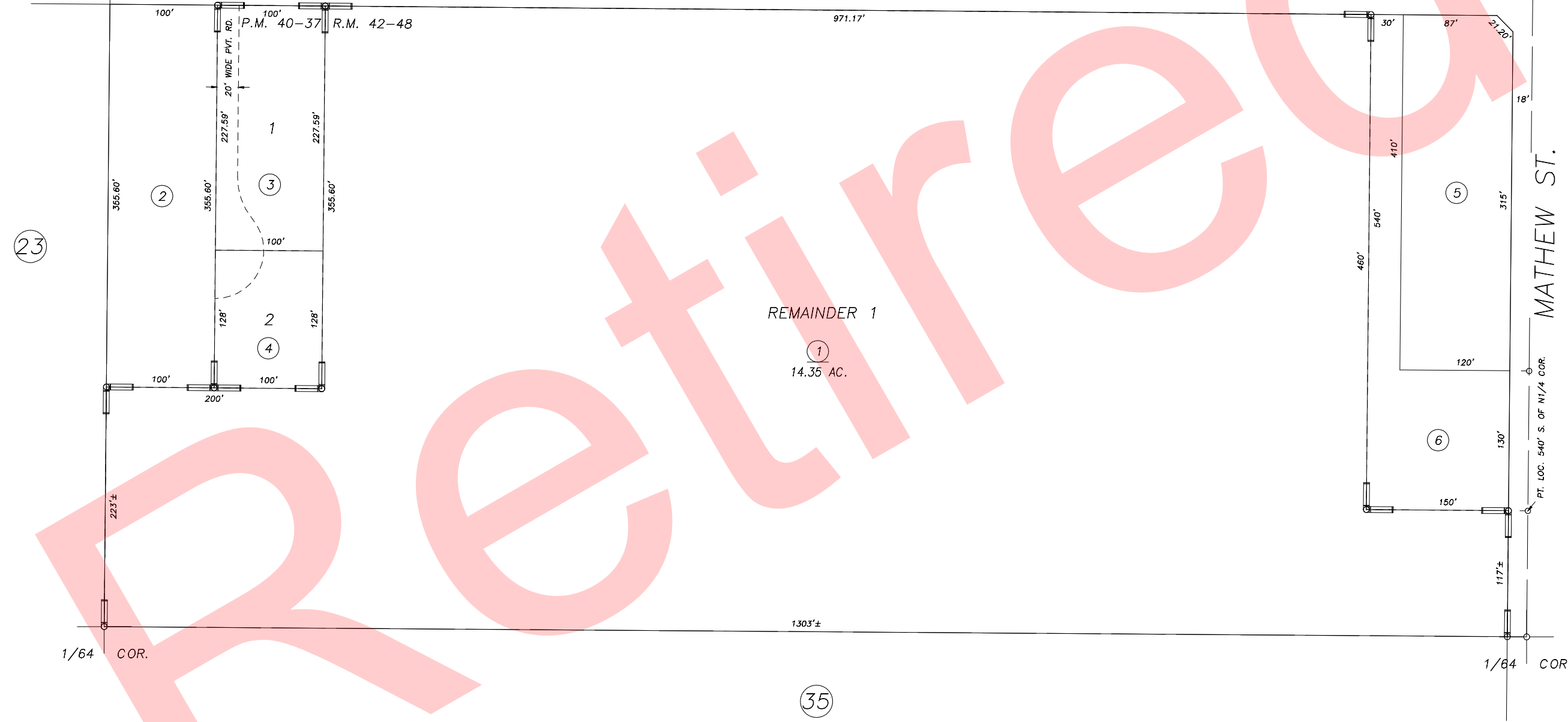
AVE. 152 OLIVE AVE.

N 1/4 COR. NW 1/4

N.1/4 COR.

1" = 100'

BASIS OF BEARINGS:  
R.M. 42-48



23

REMAINDER 1

1  
14.35 AC.

05

PARCEL MAP NO. 3933, P.M. 40-37  
POR. SUMMIT ESTATES PHASE ONE, R.M. 42-48

CITY OF PORTERVILLE  
ASSESSOR'S MAPS BK.259 , PG.34  
COUNTY OF TULARE, CALIFORNIA, U.S.A.

NOTE: Assessor's Parcel Numbers Shown in Circles ① ② ③ ④ ⑤ ⑥ ⑦ ⑧ ⑨ ⑩ ⑪ ⑫ ⑬ ⑭ ⑮ ⑯ ⑰ ⑱ ⑲ ⑳ ㉑ ㉒ ㉓ ㉔ ㉕ ㉖ ㉗ ㉘ ㉙ ㉚ ㉛ ㉜ ㉝ ㉞ ㉟ ㊱ ㊲ ㊳ ㊴ ㊵ ㊶ ㊷ ㊸ ㊹ ㊺

2007-0009567	04/01/2008	JRS
REVISION	DATE	TECH