

N1/2 OF NE1/4 OF NW1/4 SEC.33, T.21S., R.27E., M.D.B.&M.

Tax Area Codes 259-34

004-133

004-028

Bk.
245

DISCLAIMER
THIS MAP WAS PREPARED FOR LOCAL PROPERTY ASSESSMENT PURPOSES ONLY AND THE PARCELS SHOWN HEREON MAY NOT COMPLY WITH STATE AND LOCAL SUBDIVISION ORDINANCES, AND NO LIABILITY IS ASSUMED FOR THE USE OF THE INFORMATION SHOWN HEREON.

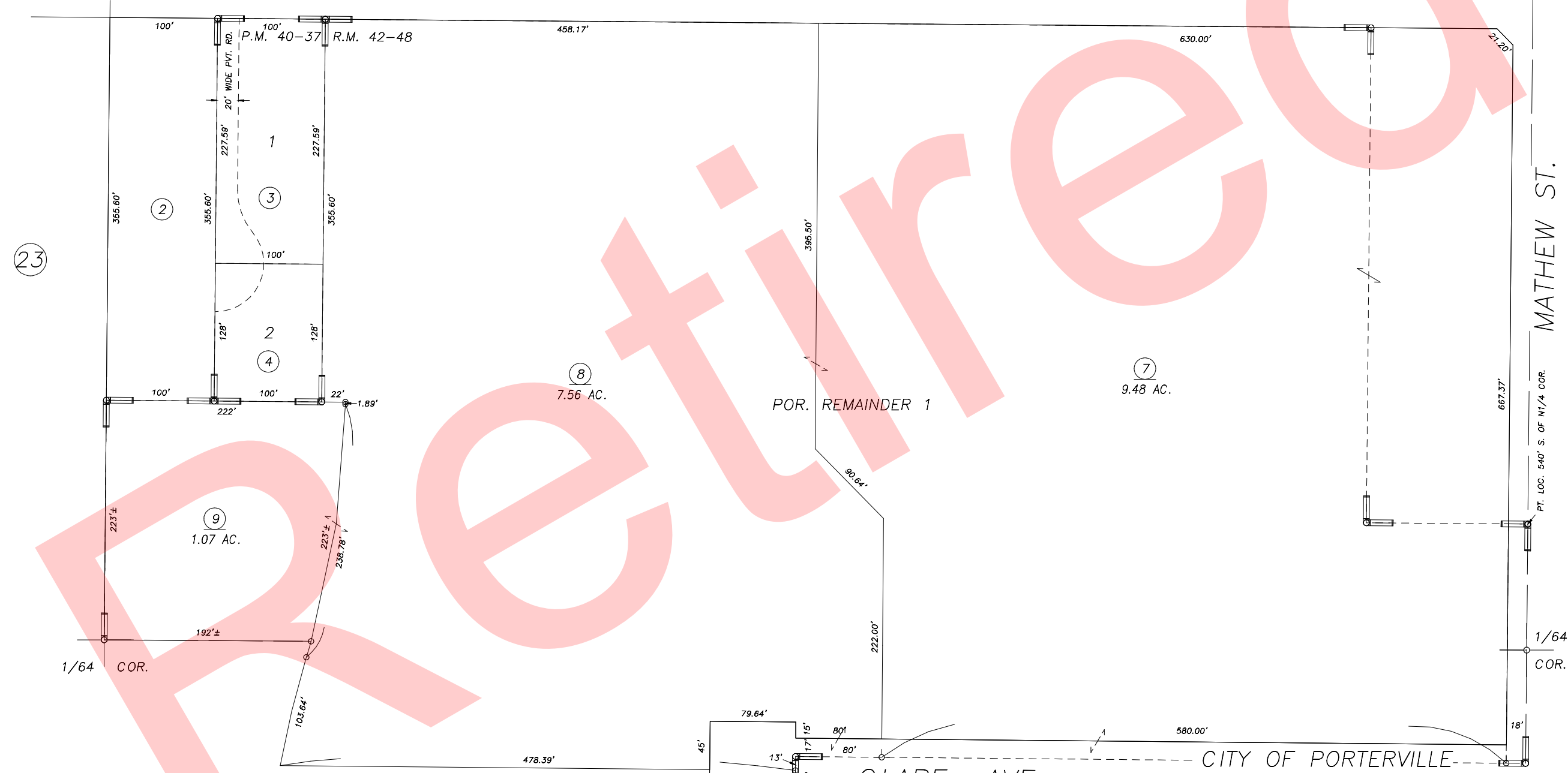
N 1/4 COR. NW 1/4

N.1/4 COR.

AVE. 152 OLIVE AVE.

1" = 100'

BASIS OF BEARINGS:
R.M. 42-48



23

05

PARCEL MAP NO. 3933, P.M. 40-37
POR. SUMMIT ESTATES PHASE ONE, R.M. 42-48

35

CLARE AVE.

CITY OF PORTERVILLE
ASSESSOR'S MAPS BK.259 , PG.34
COUNTY OF TULARE, CALIFORNIA, U.S.A.

NOTE: Assessor's Parcel Numbers Shown in Circles (1) (123)
Assessor's Block Numbers Shown in Elipses

2008-0018995	06/01/2010	KMS
REVISION	DATE	TECH