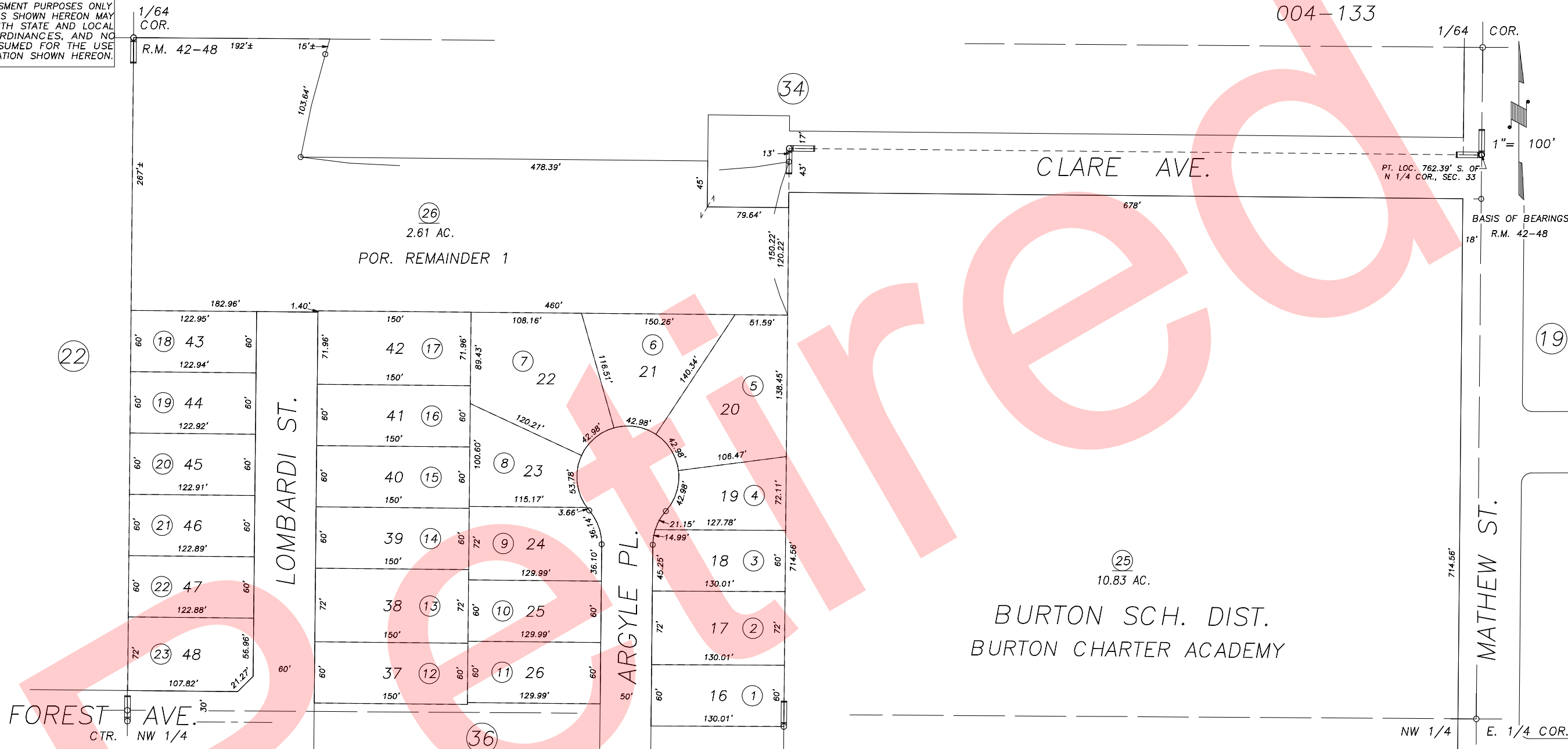


S1/2 OF NE1/4 OF NW1/4 SEC.33, T.21S., R.27E., M.D.B.&M.

Tax Area Codes 259-35

004-133

**DISCLAIMER**  
THIS MAP WAS PREPARED FOR LOCAL PROPERTY ASSESSMENT PURPOSES ONLY AND THE PARCELS SHOWN HEREON MAY NOT COMPLY WITH STATE AND LOCAL SUBDIVISION ORDINANCES, AND NO LIABILITY IS ASSUMED FOR THE USE OF THE INFORMATION SHOWN HEREON.



SUMMIT ESTATES PHASE ONE, R.M. 42-48

BURTON SCH. DIST.  
BURTON CHARTER ACADEMY

CITY OF PORTERVILLE  
ASSESSOR'S MAPS BK.259 , PG.35

36 COUNTY OF TULARE, CALIFORNIA, U.S.A.

NOTE: Assessor's Parcel Numbers Shown in Circles  
Assessor's Block Numbers Shown in Elipses

1	123	2008-0018995	06/01/2010	KMS
		REVISION	DATE	TECH