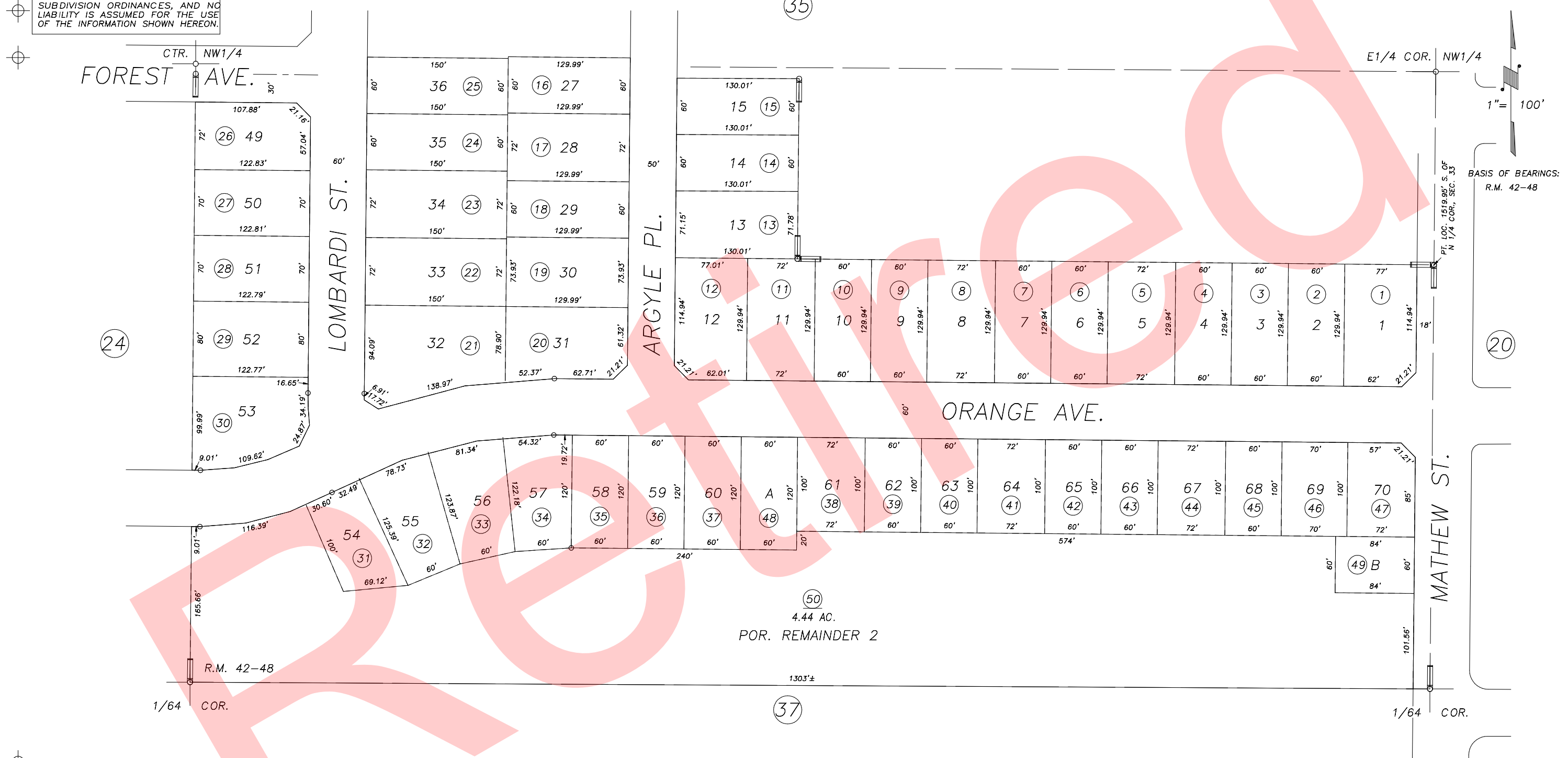


N1/2 OF SE1/4 OF NW1/4 SEC. 33, T.21S., R.27E., M.D.B.&M.

Tax Area Codes 259-36
004-133

DISCLAIMER
THIS MAP WAS PREPARED FOR LOCAL PROPERTY ASSESSMENT PURPOSES ONLY AND THE PARCELS SHOWN HEREON MAY NOT COMPLY WITH STATE AND LOCAL SUBDIVISION ORDINANCES, AND NO LIABILITY IS ASSUMED FOR THE USE OF THE INFORMATION SHOWN HEREON.



POR. SUMMIT ESTATES PHASE ONE, R.M. 42-48

CITY OF PORTERVILLE
ASSESSOR'S MAPS BK.259 , PG.36
COUNTY OF TULARE, CALIFORNIA, U.S.A.

NOTE: Assessor's Parcel Numbers Shown in Circles (1) (123)
Assessor's Block Numbers Shown in Elipses (20) (21) (22) (23) (24) (25) (26) (27) (28) (29) (30) (31) (32) (33) (34) (35) (36) (37) (38) (39) (40) (41) (42) (43) (44) (45) (46) (47) (48) (49) (50)

2007-0009567	04/01/2008	JRS
REVISION	DATE	TECH