

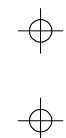
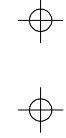
S1/2 OF SE1/4 OF NW1/4 SEC.33, T.21S., R.27E., M.D.B.&M.

Tax Area Codes 259-37

004-130

004-133

DISCLAIMER
THIS MAP WAS PREPARED FOR LOCAL PROPERTY ASSESSMENT PURPOSES ONLY AND THE PARCELS SHOWN HEREON MAY NOT COMPLY WITH STATE AND LOCAL SUBDIVISION ORDINANCES, AND NO LIABILITY IS ASSUMED FOR THE USE OF THE INFORMATION SHOWN HEREON.



1/64 COR.

1/64 COR.

36

1303'±

1" = 100'

BASIS OF BEARINGS:
R.M. 42-48

32

658.30'

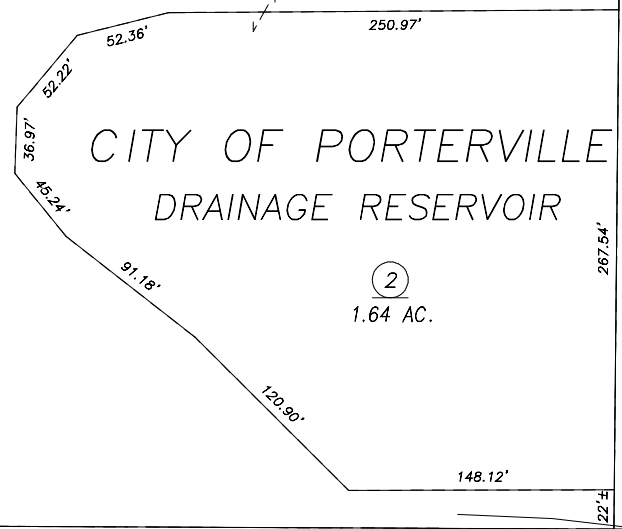
3

18.03 AC.

POR. REMAINDER 2

MATHEW ST.

33



CITY OF PORTERVILLE
DRAINAGE RESERVOIR

2

1.64 AC.

R.M. 42-48

CITY LIMIT

1320.54'

S 1/4 COR. NW1/4.

CTR. SEC.

04

POR. SUMMIT ESTATES PHASE ONE, R.M. 42-48

VICINITY OF PORTERVILLE
ASSESSOR'S MAPS BK.259 , PG.37
COUNTY OF TULARE, CALIFORNIA, U.S.A.

NOTE: Assessor's Parcel Numbers Shown in Circles ① 123
Assessor's Block Numbers Shown in Elipses

2008-0062250	09/22/2009	MLC
REVISION	DATE	TECH