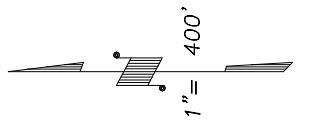


DISCLAIMER
 THIS MAP WAS PREPARED FOR LOCAL PROPERTY ASSESSMENT PURPOSES ONLY AND THE PARCELS SHOWN HEREON MAY NOT COMPLY WITH STATE AND LOCAL SUBDIVISION ORDINANCES, AND NO LIABILITY IS ASSUMED FOR THE USE OF THE INFORMATION SHOWN HEREON.

E 1/2 SECTION 6, T.22S., R.28E., M.D.B. & M.

Tax Area Code 271-09

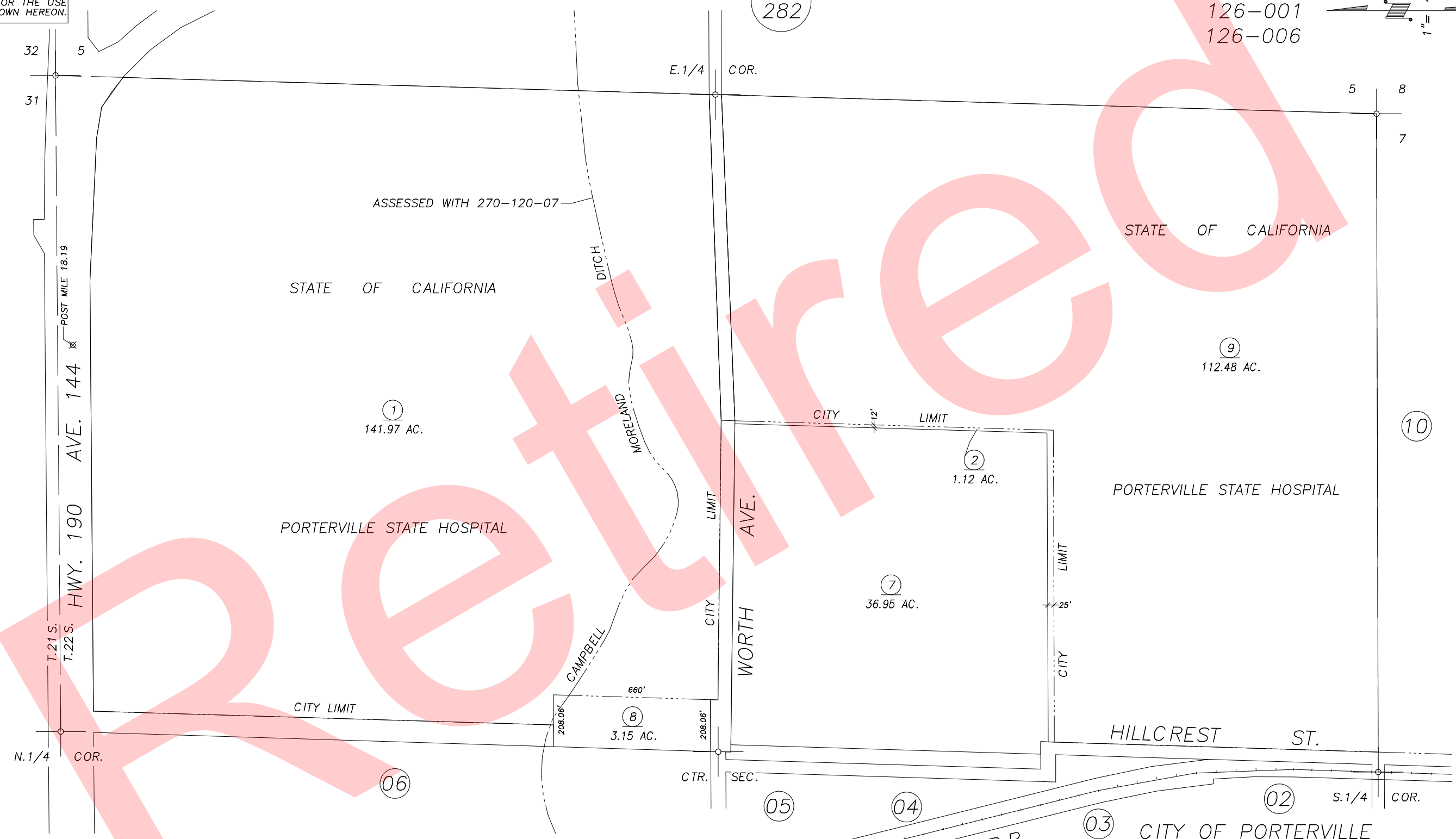
4-000
 4-005
 126-001
 126-006



DOC.	REVISION	DATE	BY
95-46503		6/10/96	KPT

Bk. 262

Bk. 282



RECORD OF SURVEY, L.S. 15-54 (W. LN. NE 1/4)

NOTE: Assessor's Block Numbers Shown in Ellipses
 Assessor's Parcel Numbers Shown in Circles

CITY OF PORTERVILLE
 ASSESSOR'S MAPS BK. 271, PG. 09
 COUNTY OF TULARE, CALIF.

96/97