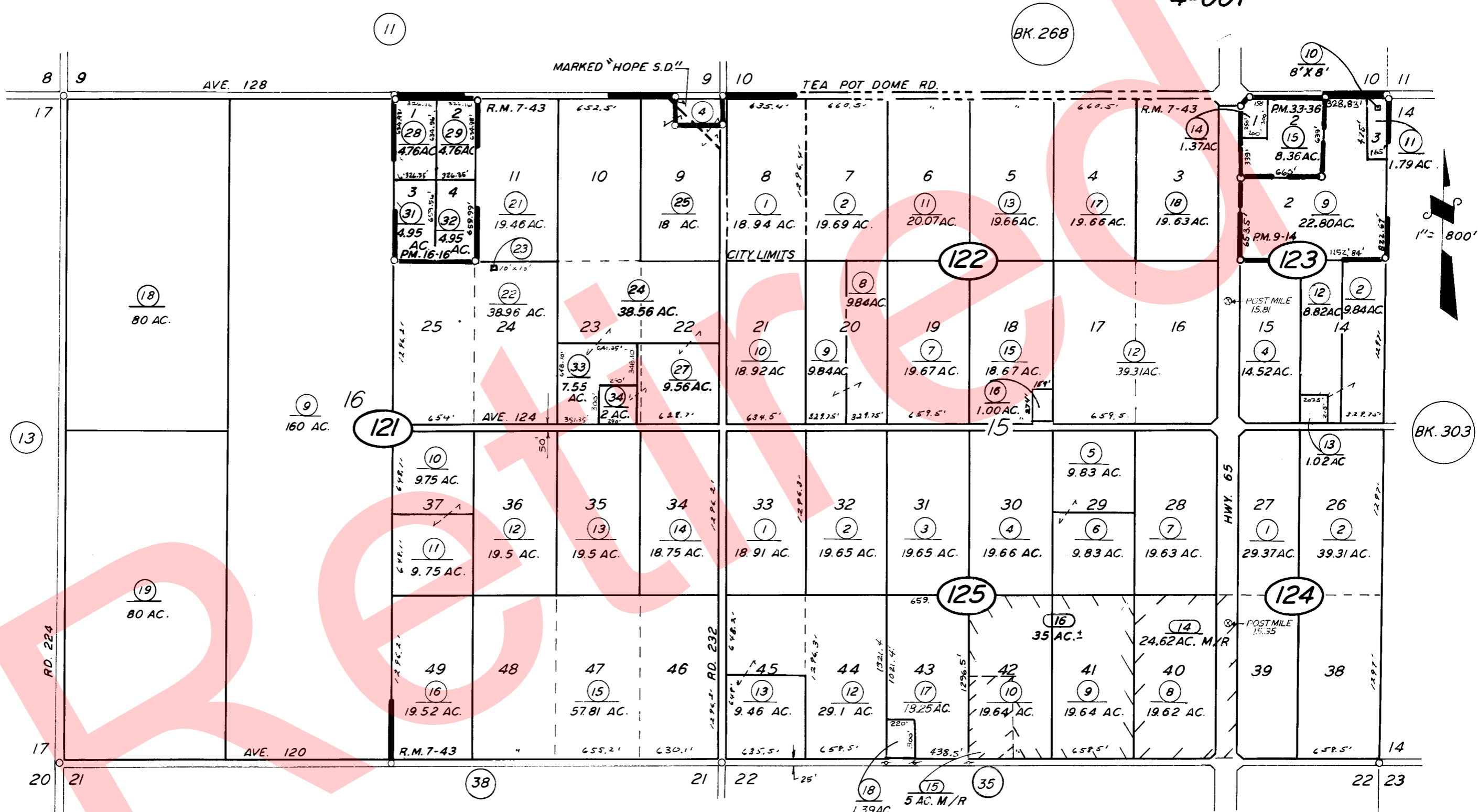


SEC'S 15 & 16 T. 22 S., R. 27 E., M. D. B. & M.

TAX CODE AREA 302-12

94-000
4-001



POR. CAMPO VERDE COLONY ,
PARCEL MAP 814 ,
PARCEL MAP 1515 ,
PARCEL MAP 3234 ,

R.M. 7-43
P.M. 9-14
P.M. 16-16
P.M. 33-36

CITY OF PORTERVILLE
ASSESSOR'S MAPS BK. 302, PG. 12.
COUNTY OF TULARE, CALIF.

NOTE - ASSESSOR'S BLOCK NUMBERS SHOWN IN ELLIPSES
ASSESSOR'S PARCEL NUMBERS SHOWN IN CIRCLES