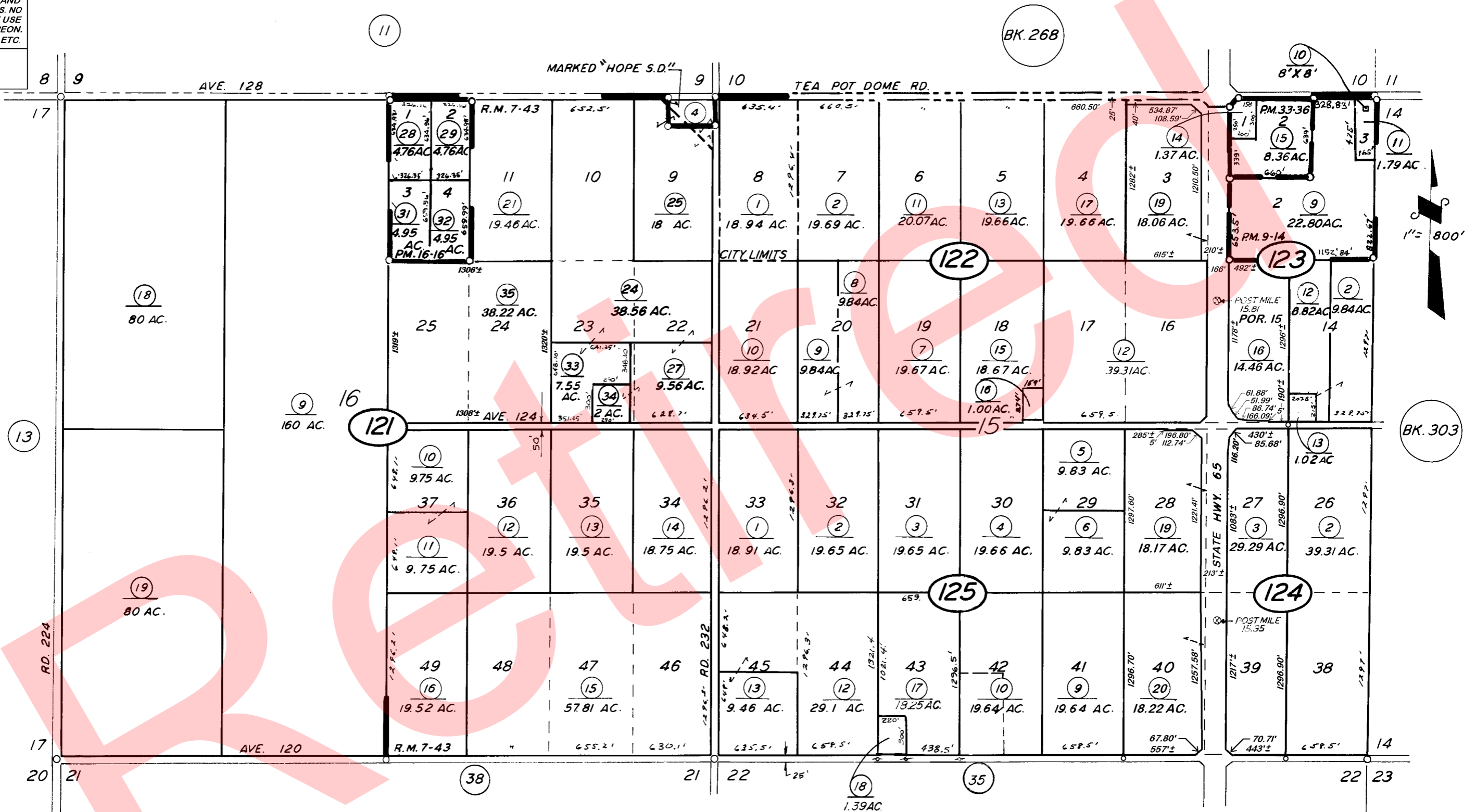


DISCLAIMER
THIS MAP WAS PREPARED FOR LOCAL PROPERTY ASSESSMENT PURPOSES ONLY. THE PARCELS SHOWN HEREON MAY NOT COMPLY WITH STATE AND LOCAL SUBDIVISION ORDINANCES. NO LIABILITY IS ASSUMED FOR THE USE OF THE INFORMATION HEREON. R & T CODE SEC. 327, 408.3, ETC.
REVISED: 01/13/2015
REASON: 2014-0062782
CAD TECH: RLW



POR. CAMPO VERDE COLONY,
PARCEL MAP 814,
PARCEL MAP 1515,
PARCEL MAP 3234,
POR. RECORD OF SURVEY (STATE HWY. 65),
POR. RECORD OF SURVEY (STATE HWY. 65),
R.M. 7-43
P.M. 9-14
P.M. 16-16
P.M. 33-36
L.S. 26-26
L.S. 27-91

VICINITY OF PORTERVILLE
ASSESSOR'S MAPS BK. 302, PG. 12.
COUNTY OF TULARE, CALIF.

NOTE - ASSESSOR'S BLOCK NUMBERS SHOWN IN ELLIPSES
ASSESSOR'S PARCEL NUMBERS SHOWN IN CIRCLES