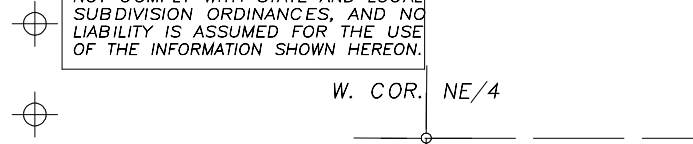


S1/2 OF NE/4 OF SEC.9, T.22S., R27E., M.D.B.&M.

Tax Area Codes 302-39

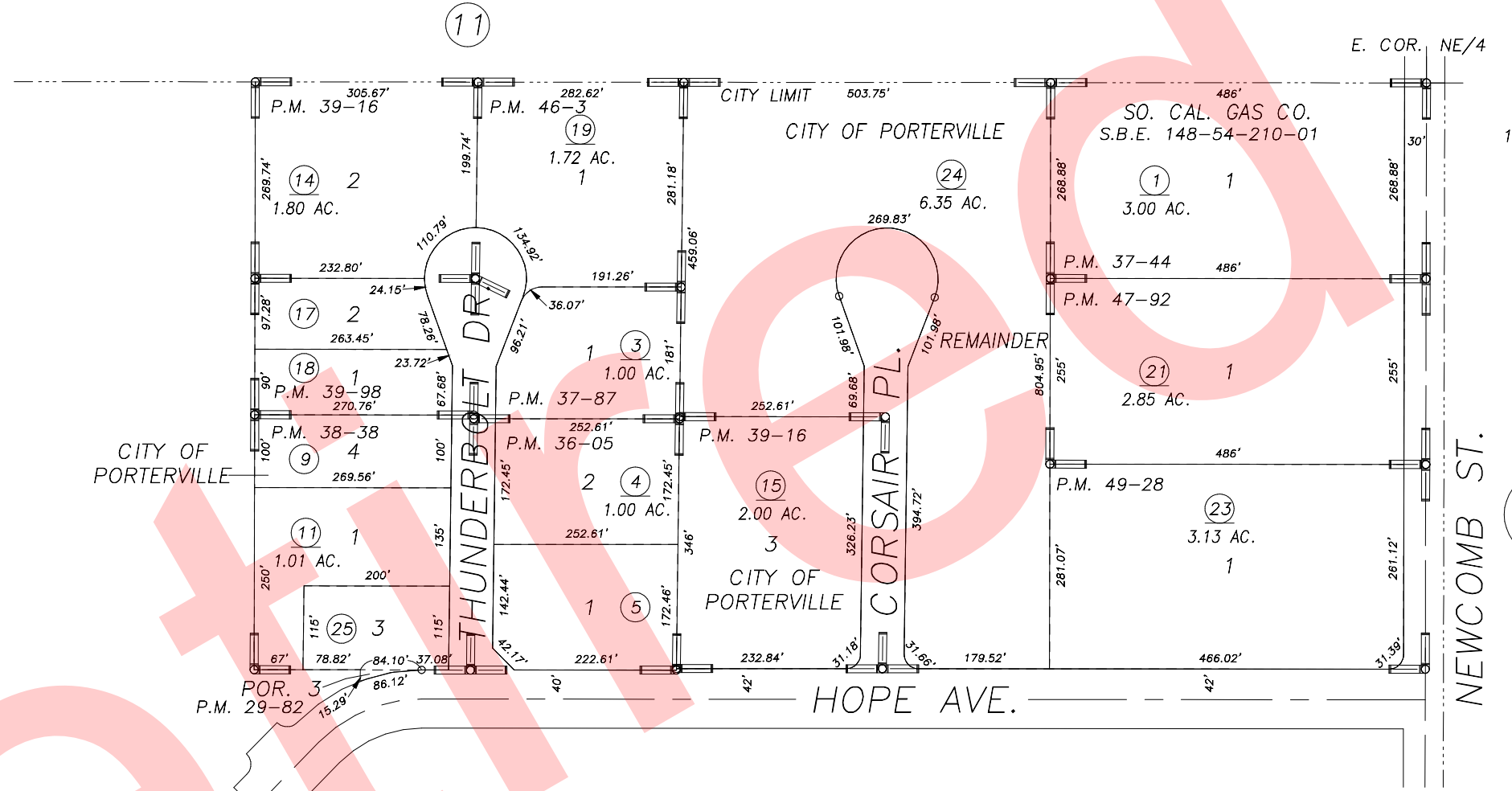
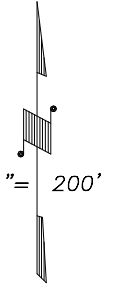
004-001  
004-079

**DISCLAIMER**  
THIS MAP WAS PREPARED FOR LOCAL PROPERTY ASSESSMENT PURPOSES ONLY AND THE PARCELS SHOWN HEREON MAY NOT COMPLY WITH STATE AND LOCAL SUBDIVISION ORDINANCES, AND NO LIABILITY IS ASSUMED FOR THE USE OF THE INFORMATION SHOWN HEREON.



W. COR. NE/4

E. COR. NE/4



Bk. 268

CTR. SEC.

E.1/4 COR.

- POR. PARCEL MAP 2881, P.M. 29-82
- PARCEL MAP NO. 3503, P.M. 36-05
- PARCEL MAP NO. 3641, P.M. 37-44
- PARCEL MAP NO. 3684, P.M. 37-87
- PARCEL MAP NO. 3735, P.M. 38-38
- PARCEL MAP NO. 3813, P.M. 39-16
- PARCEL MAP NO. 3894, P.M. 39-98

- PARCEL MAP NO. 4498, P.M. 46-3
- PARCEL MAP NO. 4687, P.M. 47-92
- PARCEL MAP NO. 4823, P.M. 49-28

CITY OF PORTERVILLE  
ASSESSOR'S MAPS BK.302 , PG.39  
COUNTY OF TULARE, CALIFORNIA, U.S.A.

NOTE: Assessor's Parcel Numbers Shown in Circles (1) (123)  
Assessor's Block Numbers Shown in Ellipses

2007-0055004	03/10/2009	MLC
REVISION	DATE	TECH