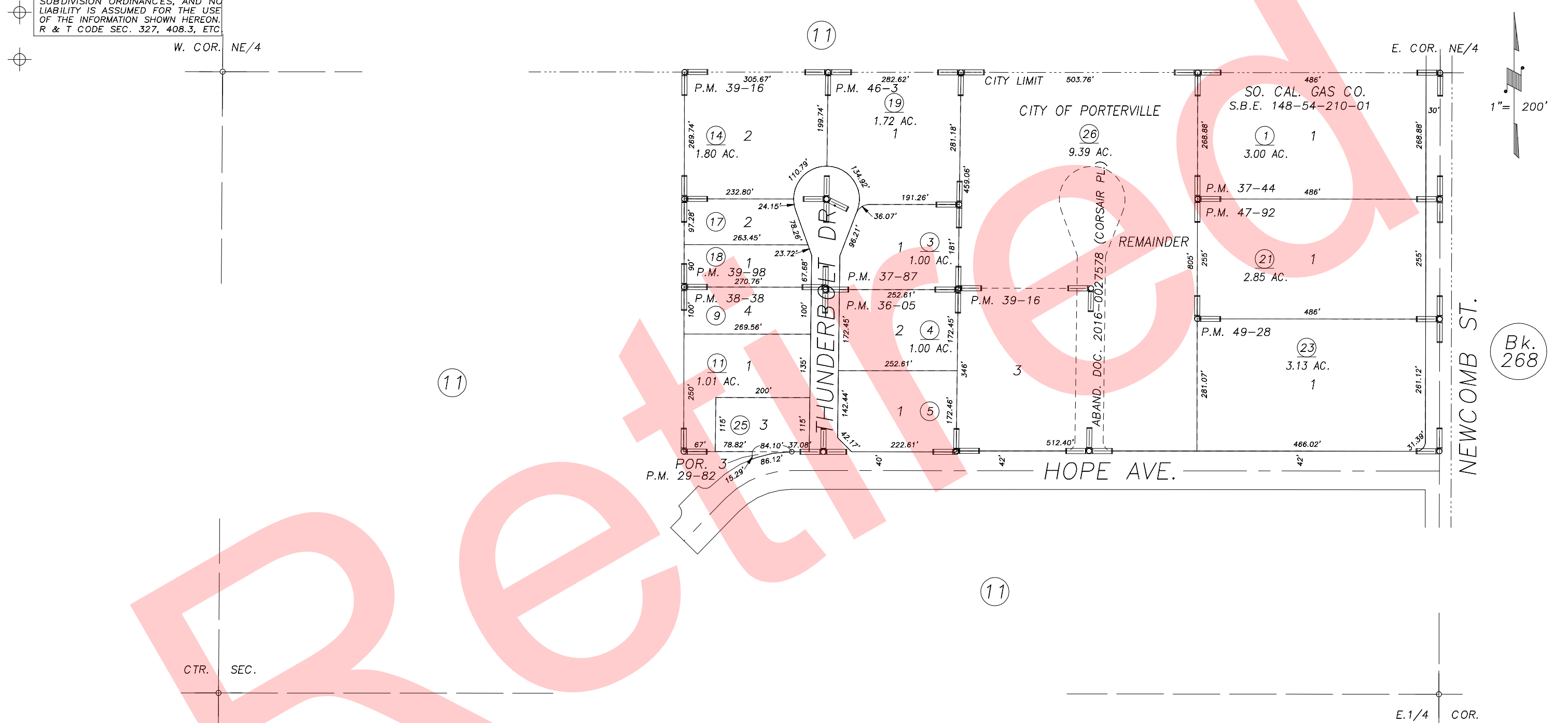


S1/2 OF NE/4 OF SEC.9, T.22S., R27E., M.D.B.&M.

Tax Area Codes 302-39

004-001  
004-079

**DISCLAIMER**  
THIS MAP WAS PREPARED FOR LOCAL PROPERTY ASSESSMENT PURPOSES ONLY AND THE PARCELS SHOWN HEREON MAY NOT COMPLY WITH STATE AND LOCAL SUBDIVISION ORDINANCES, AND NO LIABILITY IS ASSUMED FOR THE USE OF THE INFORMATION SHOWN HEREON. R & T CODE SEC. 327, 408.3, ETC.



- POR. PARCEL MAP 2881, P.M. 29-82
- PARCEL MAP NO. 3503, P.M. 36-05
- PARCEL MAP NO. 3641, P.M. 37-44
- PARCEL MAP NO. 3684, P.M. 37-87
- PARCEL MAP NO. 3735, P.M. 38-38
- PARCEL MAP NO. 3813, P.M. 39-16
- PARCEL MAP NO. 3894, P.M. 39-98

- PARCEL MAP NO. 4498, P.M. 46-3
- PARCEL MAP NO. 4687, P.M. 47-92
- PARCEL MAP NO. 4823, P.M. 49-28

CITY OF PORTERVILLE  
ASSESSOR'S MAPS BK.302 , PG.39  
COUNTY OF TULARE, CALIFORNIA, U.S.A.

NOTE: Assessor's Parcel Numbers Shown in Circles (1) (123)  
Assessor's Block Numbers Shown in Elipses

2016-0030051	08/04/2016	NFL
REVISION	DATE	TECH