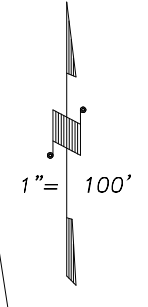
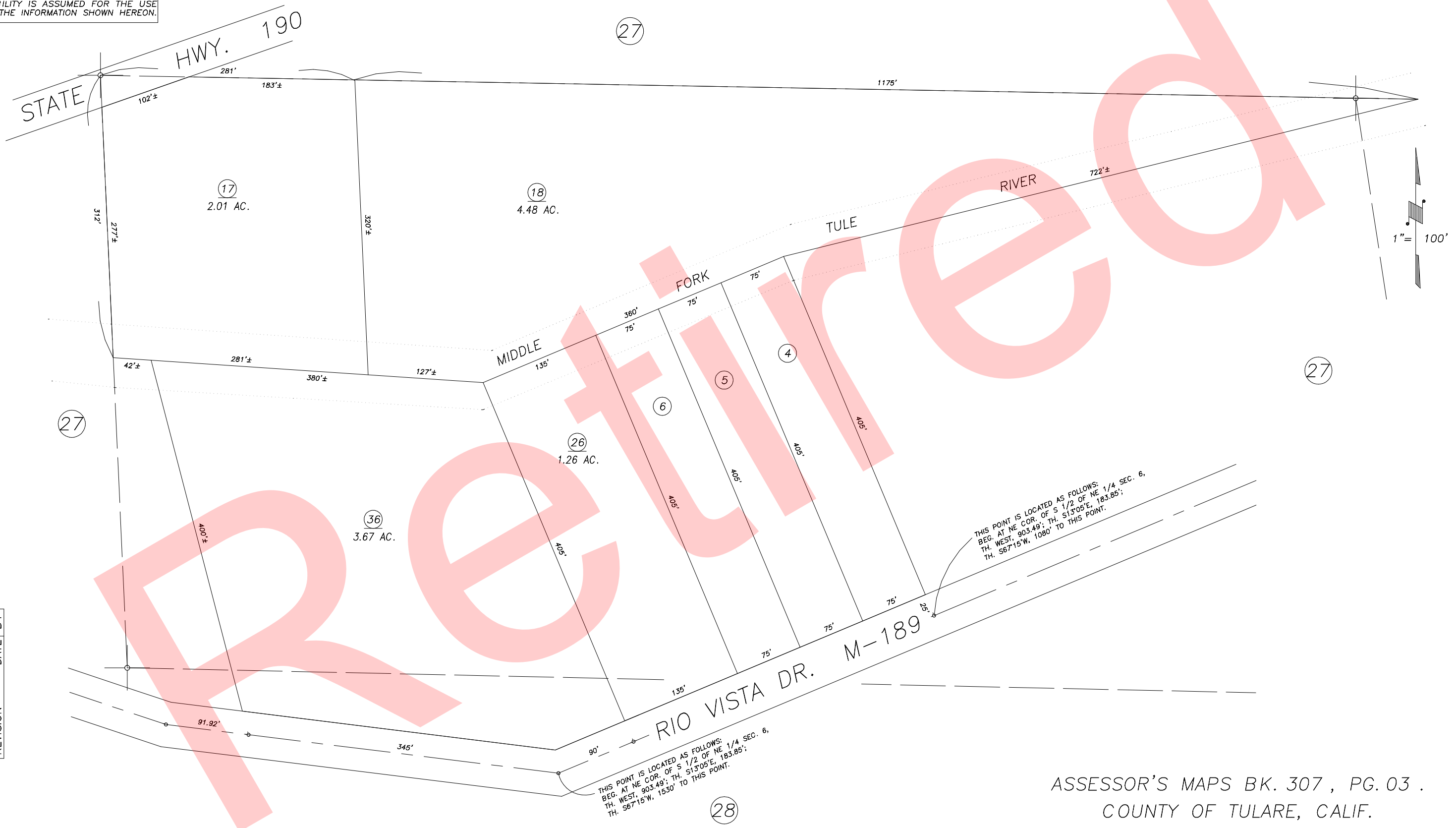


DISCLAIMER
 THIS MAP WAS PREPARED FOR LOCAL PROPERTY ASSESSMENT PURPOSES ONLY AND THE PARCELS SHOWN HEREON MAY NOT COMPLY WITH STATE AND LOCAL SUBDIVISION ORDINANCES, AND NO LIABILITY IS ASSUMED FOR THE USE OF THE INFORMATION SHOWN HEREON.

POR. SW 1/4 OF NE 1/4 SEC.6, T.21 S., R.30 E., M.D.B.&M.

Tax Area Code 307-03
 136-006



REVISION	DATE	BY
9/20/2000	KMS	

THIS POINT IS LOCATED AS FOLLOWS:
 BEG. AT NE COR. OF S 1/2 OF NE 1/4 SEC. 6,
 TH. WEST, 903.49'; TH. S13°05'E, 183.85';
 TH. S67°15'W, 1080' TO THIS POINT.

THIS POINT IS LOCATED AS FOLLOWS:
 BEG. AT NE COR. OF S 1/2 OF NE 1/4 SEC. 6,
 TH. WEST, 903.49'; TH. S13°05'E, 183.85';
 TH. S67°15'W, 1530' TO THIS POINT.

ASSESSOR'S MAPS BK. 307 , PG. 03 .
 COUNTY OF TULARE, CALIF.

NOTE: Assessor's Block Numbers Shown in Ellipses
 Assessor's Parcel Numbers Shown in Circles

00/01