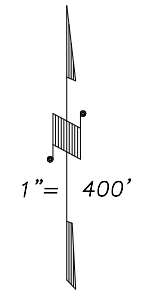
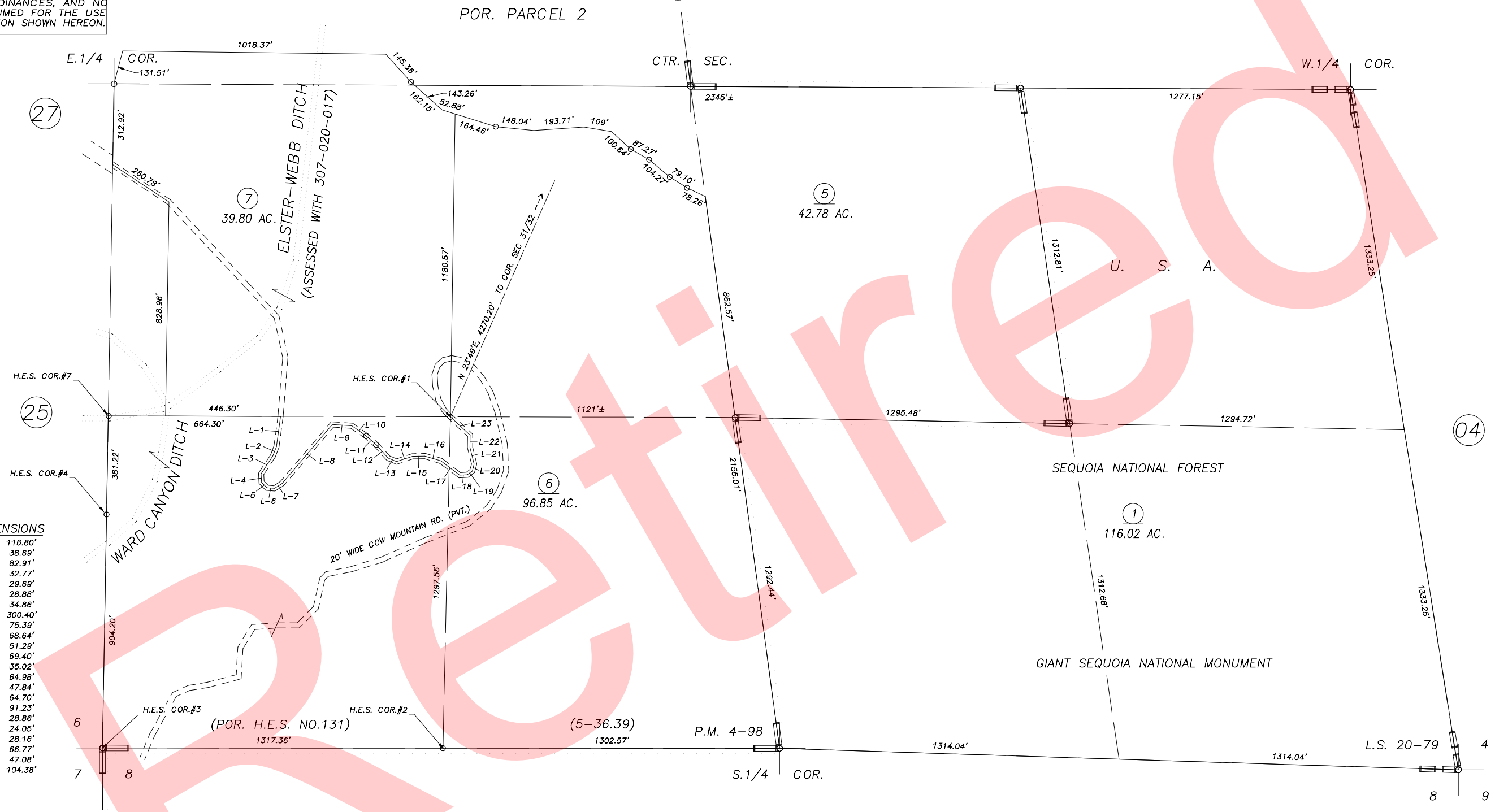


DISCLAIMER
 THIS MAP WAS PREPARED FOR LOCAL PROPERTY ASSESSMENT PURPOSES ONLY AND THE PARCELS SHOWN HEREON MAY NOT COMPLY WITH STATE AND LOCAL SUBDIVISION ORDINANCES, AND NO LIABILITY IS ASSUMED FOR THE USE OF THE INFORMATION SHOWN HEREON.

S1/2 SEC.5, T.21S., R.30E., M.D.B.&M.

Tax Area Code 307-26
 136-006



LINE DIMENSIONS

L-1	116.80'
L-2	38.69'
L-3	82.91'
L-4	32.77'
L-5	29.69'
L-6	28.88'
L-7	34.86'
L-8	300.40'
L-9	75.39'
L-10	68.64'
L-11	51.29'
L-12	69.40'
L-13	35.02'
L-14	64.98'
L-15	47.84'
L-16	64.70'
L-17	91.23'
L-18	28.86'
L-19	24.05'
L-20	28.16'
L-21	66.77'
L-22	47.08'
L-23	104.38'

POR. PARCEL MAP 398, P.M. 4-98
 POR. RECORD OF SURVEY, L.S. 20-79

VICINITY OF SPRINGVILLE
 ASSESSOR'S MAPS BK.307 , PG26
 COUNTY OF TULARE, STATE OF CALIFORNIA, U.S.A.

NOTE: Assessor's Parcel Numbers Shown in Circles (1) (23)
 Assessor's Block Numbers Shown in Elipses (1) (123)

2001-0034168	01/30/2003	PHN
REVISION	DATE	TECH