

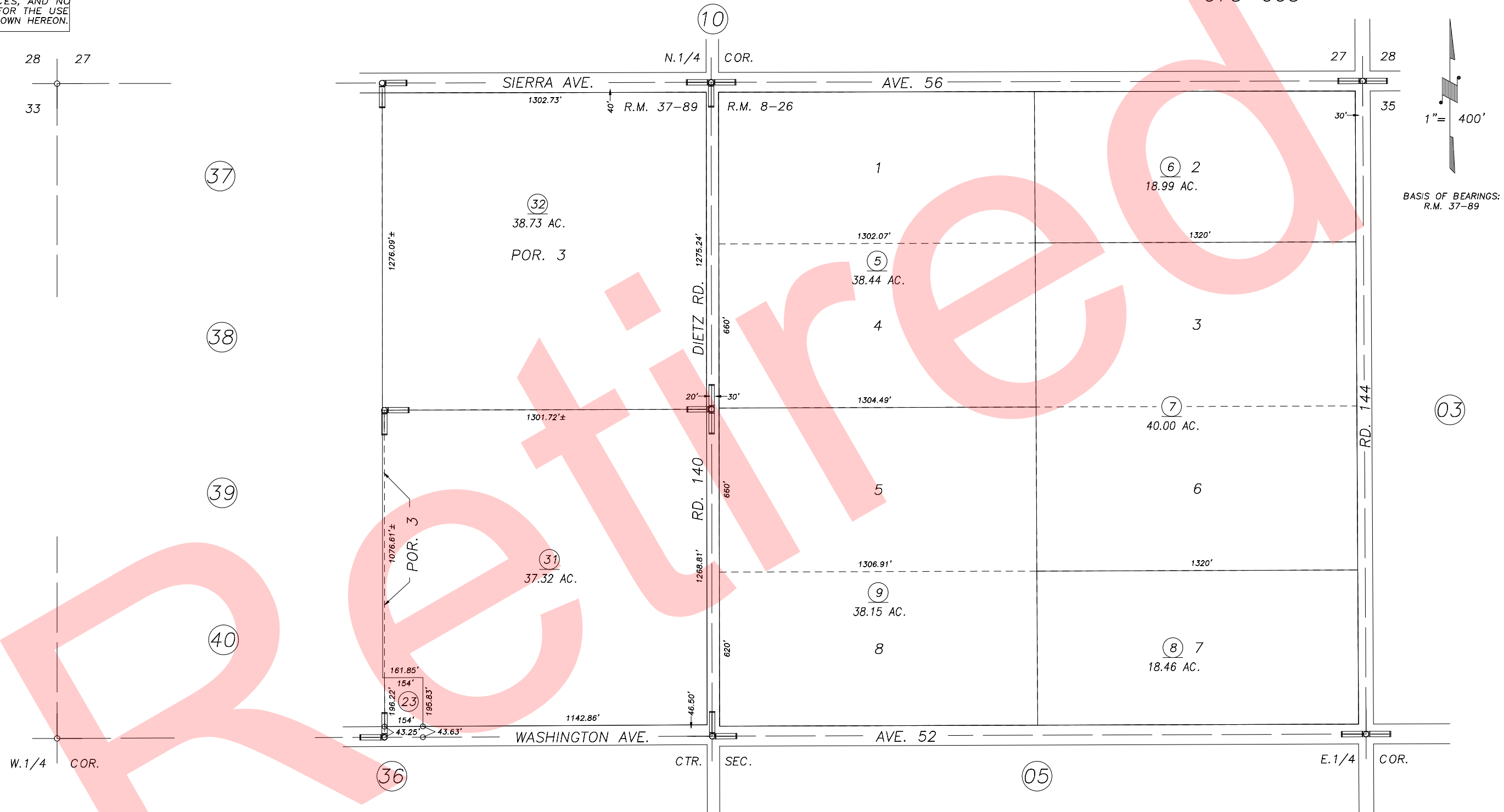
DISCLAIMER
 THIS MAP WAS PREPARED FOR LOCAL PROPERTY ASSESSMENT PURPOSES ONLY AND THE PARCELS SHOWN HEREON MAY NOT COMPLY WITH STATE AND LOCAL SUBDIVISION ORDINANCES, AND NO LIABILITY IS ASSUMED FOR THE USE OF THE INFORMATION SHOWN HEREON.

N1/2 SEC.34, T.23S., R.25E., M.D.B.&M.

Tax Area Code 318-09

075-002

075-003



POR. EARLIMART COLONY LANDS, R.M. 8-26
 POR. TRACT NO. 734, R.M. 37-89

VICINITY OF EARLIMART
 ASSESSOR'S MAPS BK.318 , PG.09
 COUNTY OF TULARE, STATE OF CALIFORNIA, U.S.A.

NOTE: Assessor's Parcel Numbers Shown in Circles (1) (123)
 Assessor's Block Numbers Shown in Elipses

2002-0079481	03/25/2003	KMS
REVISION	DATE	TECH