

**DISCLAIMER**

THIS MAP WAS PREPARED FOR LOCAL PROPERTY ASSESSMENT PURPOSES ONLY. THE PARCELS SHOWN HEREON MAY NOT COMPLY WITH STATE AND LOCAL SUBDIVISION ORDINANCES. NO LIABILITY IS ASSUMED FOR THE USE OF THE INFORMATION HEREON.

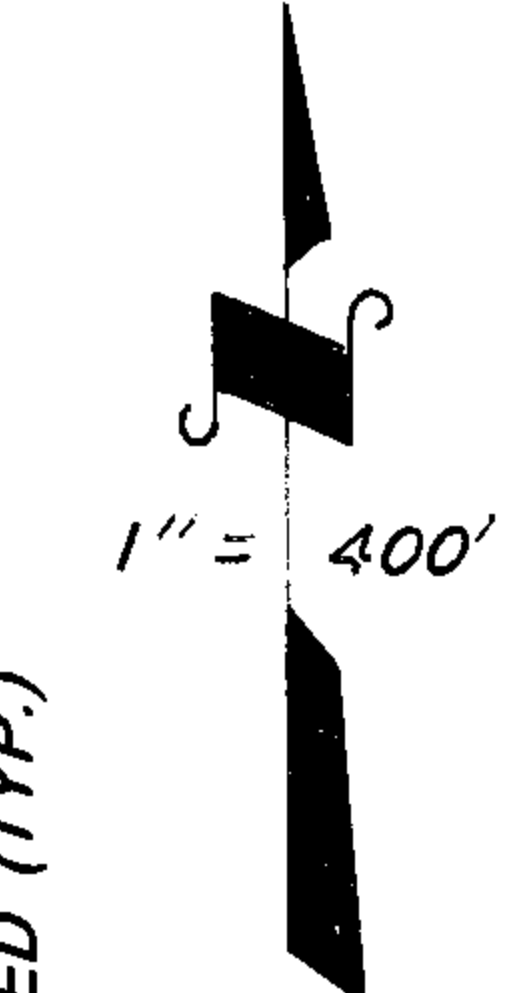
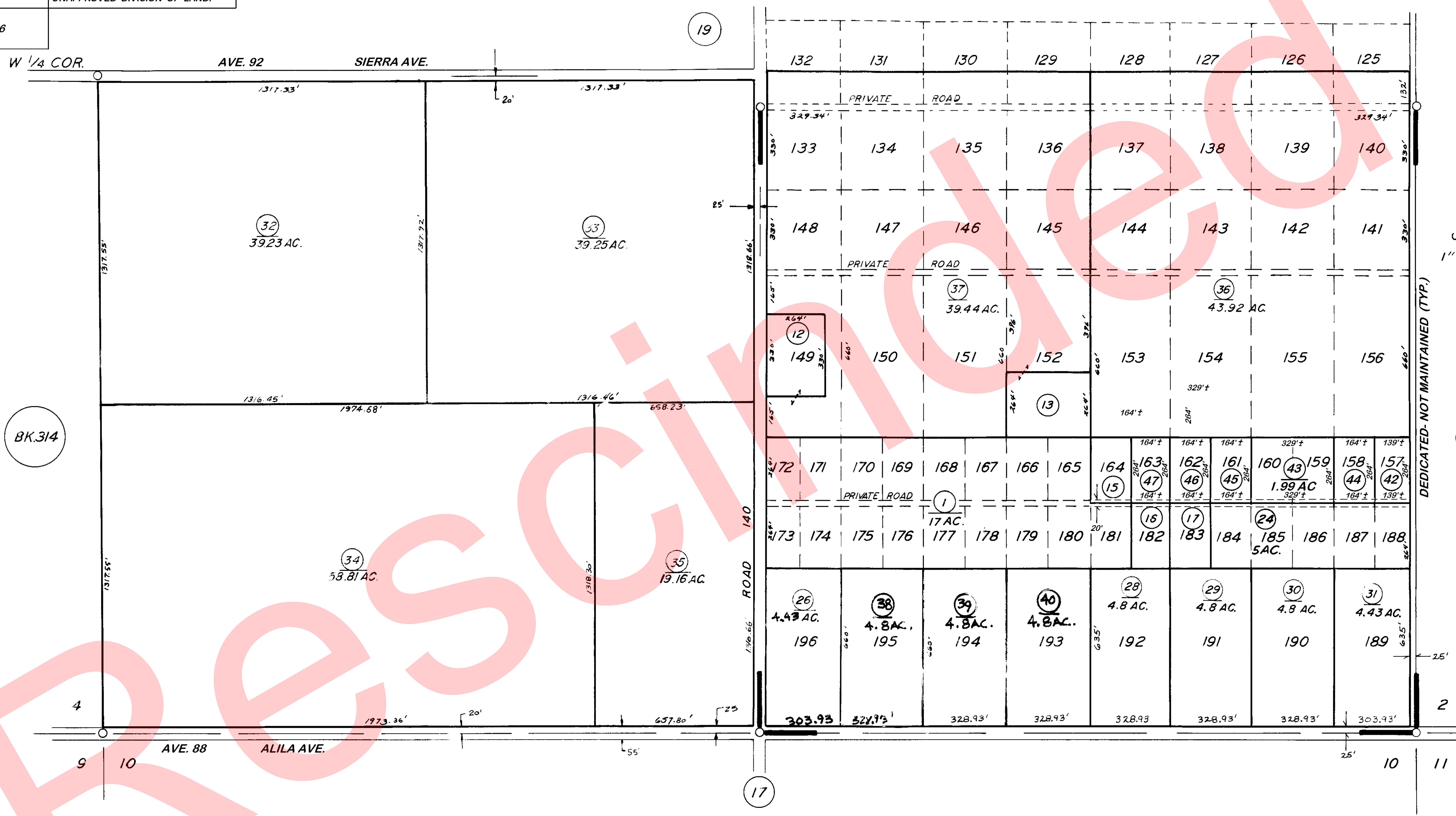
**NOTICE OF RESCISSION**

THIS MAP WAS RESCINDED BY ORDER OF THE CADASTRAL SUPERVISOR ON 07/06/2009 BACK TO 04/23/2007 TO REINSTATE APN 018 & 020, WHICH WERE INADVERTANTLY SPLIT IN REACTION TO AN UNAPPROVED DIVISION OF LAND.

REVISED: 04/24/2007  
REASON: 2006-0005936  
CAD TECH: JRS

POR. S 1/2 SEC. 3, T.23S., R.25E., M.D.B.&M.

TAX CODE AREA 318-18  
124-001



POR. PIXLEY TRACT NO. 1 R.M. 8 - 52.

ASSESSOR'S MAPS BK. 318, PG. 18.

COUNTY OF TULARE, CALIF.

NOTE - ASSESSOR'S BLOCK NUMBERS SHOWN IN ELLIPSES  
ASSESSOR'S PARCEL NUMBERS SHOWN IN CIRCLES