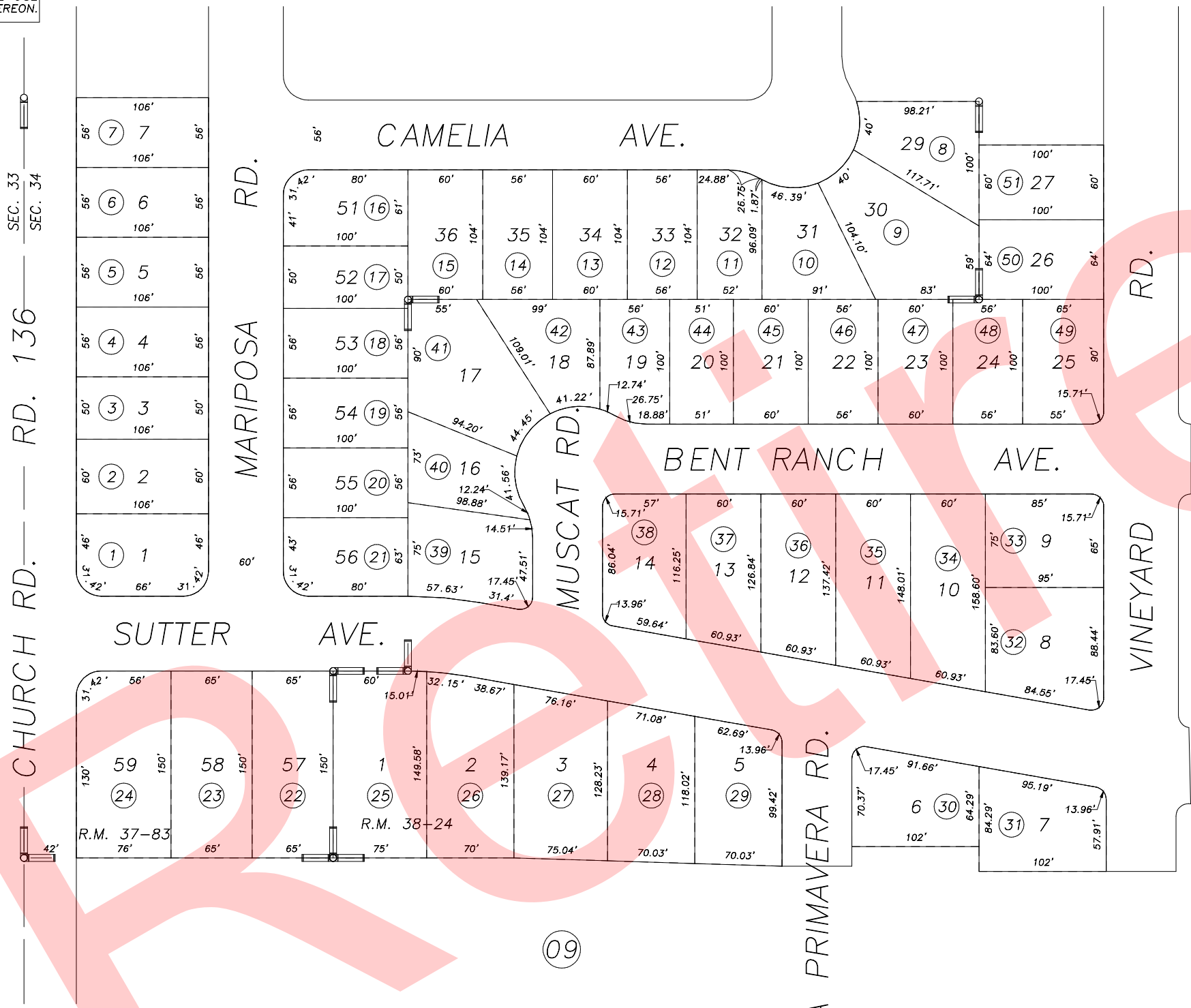
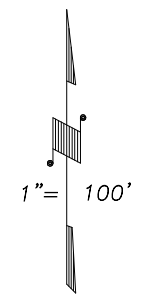


DISCLAIMER
 THIS MAP WAS PREPARED FOR LOCAL PROPERTY ASSESSMENT PURPOSES ONLY AND THE PARCELS SHOWN HEREON MAY NOT COMPLY WITH STATE AND LOCAL SUBDIVISION ORDINANCES, AND NO LIABILITY IS ASSUMED FOR THE USE OF THE INFORMATION SHOWN HEREON.

POR. NW 1/4 SECTION 34, T.23S., R.25E., M.D.B. & M.

Tax Area Code 318-38
 75-003



Bk. 314

R.M. 38-24	8/13/99	KPT	BY
REVISION	DATE		

POR. TRACT NO. 733 PHASE 2, R.M. 37-83
 POR. TRACT NO. 735 PHASE 1, R.M. 38-24

ASSESSOR'S MAPS BK. 318 , PG. 38 .
 COUNTY OF TULARE, CALIF.

NOTE: Assessor's Block Numbers Shown in Ellipses
 Assessor's Parcel Numbers Shown in Circles

00/01